

Chinon Auto GL-II

This camera manual library is for reference
and historical purposes, all rights reserved.

This page is copyright© by mike@butkus.org, M. Butkus, NJ.

This page may not be sold or distributed without
the expressed permission of the producer.

I have no connection with any camera company.

On-line camera manual library

**If you find this manual useful,
how about a donation of \$3 to:**

M. Butkus, 29 Lake Ave.,
High Bridge, NJ 08829-1701
and send your e-mail address
so I can thank you.

Most other places would charge
you \$7.50 for a electronic copy
or \$18.00 for a hard to read Xerox copy.

This will help me to continue to host this site,
buy new manuals, and pay their shipping costs.

It'll make you feel better, won't it ?

**If you use Pay Pal or wish to use your credit card,
click on the secure site below**



www.PayPal.me/butkus

Venmo @mike-butkus-camera Ph. 2083

[Back to main camera manual page](#)

www.butkus.us



This is the entire manual, there are very few written instructions.

ENGLISH

- Keep the battery out of the reach of children. If a battery should be swallowed, contact a doctor immediately.
- Batteries should never be subjected to excessive heat, fire, recharging or be intentionally short circuited or disassembled. The battery may be damaged and could result in an explosion.
- Always insert a battery correctly ,f +/-). Reversing the polarity could cause a chemical reaction or induce an explosion.
- Cameras utilize a high voltage electrical circuit. Never attempt to disassemble the camera. Should service be required, always contact an authorized repair center.
- The Chinon Auto GL and Auto GL-II Cameras do not have waterproof bodies. They should not be used in rain or underwater. If the camera should get wet, remove the battery and then wipe the camera dry with a clean cloth. Contact an authorized service center as soon as possible. Do not attempt to disassemble the camera yourself or try to dry the camera in an oven or other heat source.
- Never leave the camera in a closed car situated in direct sunlight. The increased heat build-up can damage the camera.
- The neck strap of the camera may cause injury to small children. Always keep the camera safely stored out of the reach of small children.

· SAFETY LOCK SYSTEM

The Chinon Auto GL and Auto GL-II incorporate a "Safety Lock" system that prohibits the release of the shutter and film winding unless the film is properly loaded and in the camera. For testing camera functions with out a film cartridge, release the shutter with the back cover opened.

SPECIFICATIONS

TYPE: Lens shutter type automatic 35 mm compact camera.

PICTURE FORMAT: 24x36 mm

LENS: 35 mm f4.5, 3 elements in 3 groups.

VIEWFINDER: Inversed Galilean viewfinder, Under exposure warning/Battery check LED.

SHUTTER: Mechanically, controlled shutter, Shutter speed 1/125 sec., Shutter locks when the lens cover is closed.

EXPOSURE METER: Controlled by two aperture settings of F4.5, 8, CdS photo cell for under exposure warning.

ISO RANGE: Fixed for ISO 100/200 and 400 rated color negative films. Automatic low light level warning adjustment for DX films.

FOCUSING: Fixed type, 1.3 meter (4.26 ft) to infinity.

FILM LOADING: Auto loading system by built-in motor.

FILM WIND: Automatic power winder for single frame advance.

FILM REWIND: Automatic power rewinding; rewind actuated with rewind switch.

AUTO REWIND STOP: Film rewinding automatically stops upon completion.

EXPOSURE COUNTER: Indicates number of exposed frames and returns frame by frame while rewinding, and resets to "S" when camera back is opened.

FLASH: Built-in fixed flash unit. Guide number 10 (ISO 100: meter), Effective range of 1.6-3.5 meter (5.25-10.6 ft) at ISO 100. Recycling time of approximately 5 seconds. Flash ready indicator built-in.

LENS COVER: Built-in, shutter locks with lens cover closed.

OTHER FEATURES: Film type window and hand strap.

POWER SOURCE: Two 1.5 V "AA" size alkaline batteries (LR6).

DIMENSIONS: 127(W)x70(H)x46(D) mm (5.00"x2.72"x1.74~)

WEIGHT: 255 grams (8.83 oz).

NOMENCLATURE

1. Hand strap

2. Shutter release button

3. Viewfinder

4. Flash

5. Flash switch

6. Lens cover

7. Lens

8. Exposure metering window

9. Grip

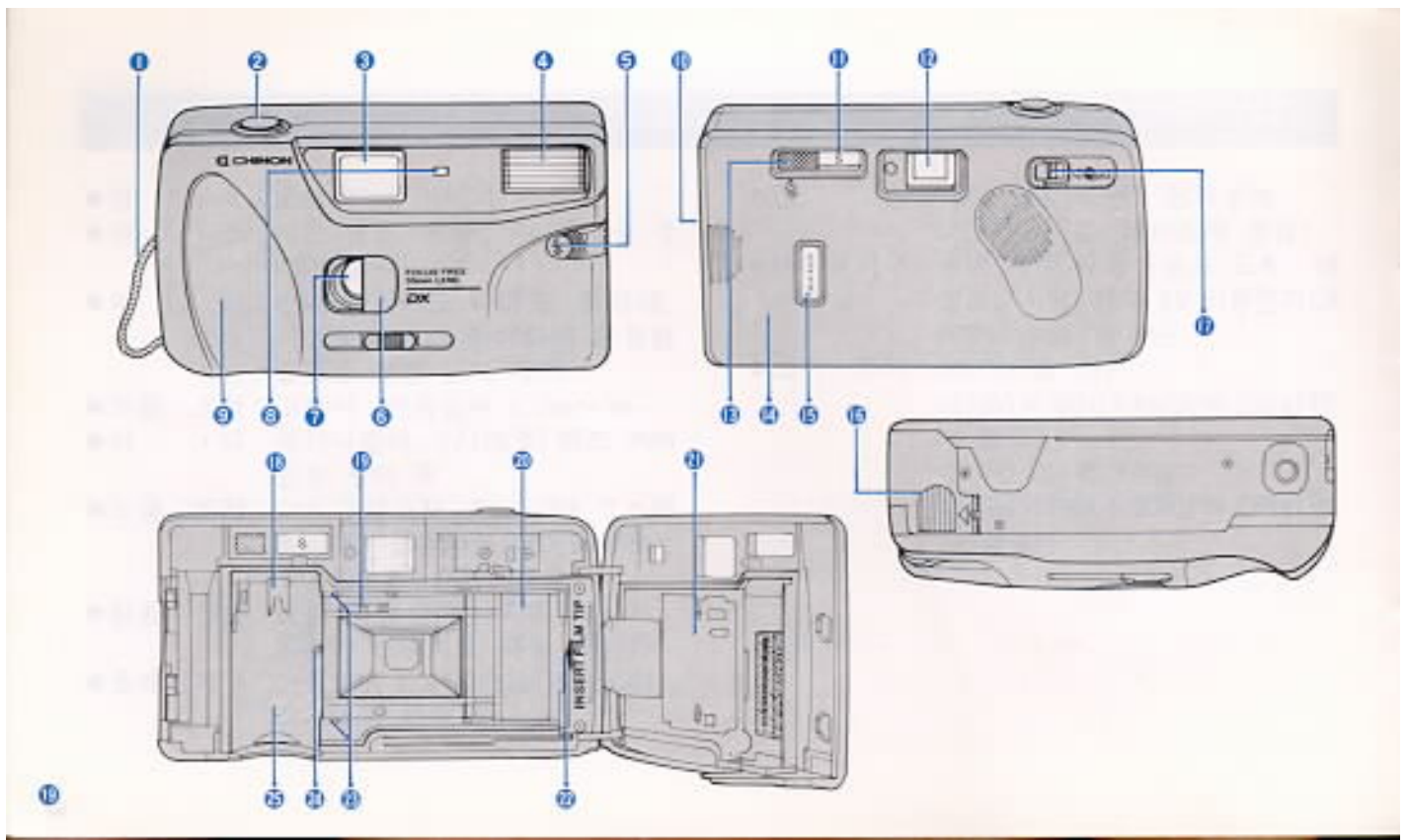
10. Back cover release button

11. Frame counter

12. Viewfinder eyepiece

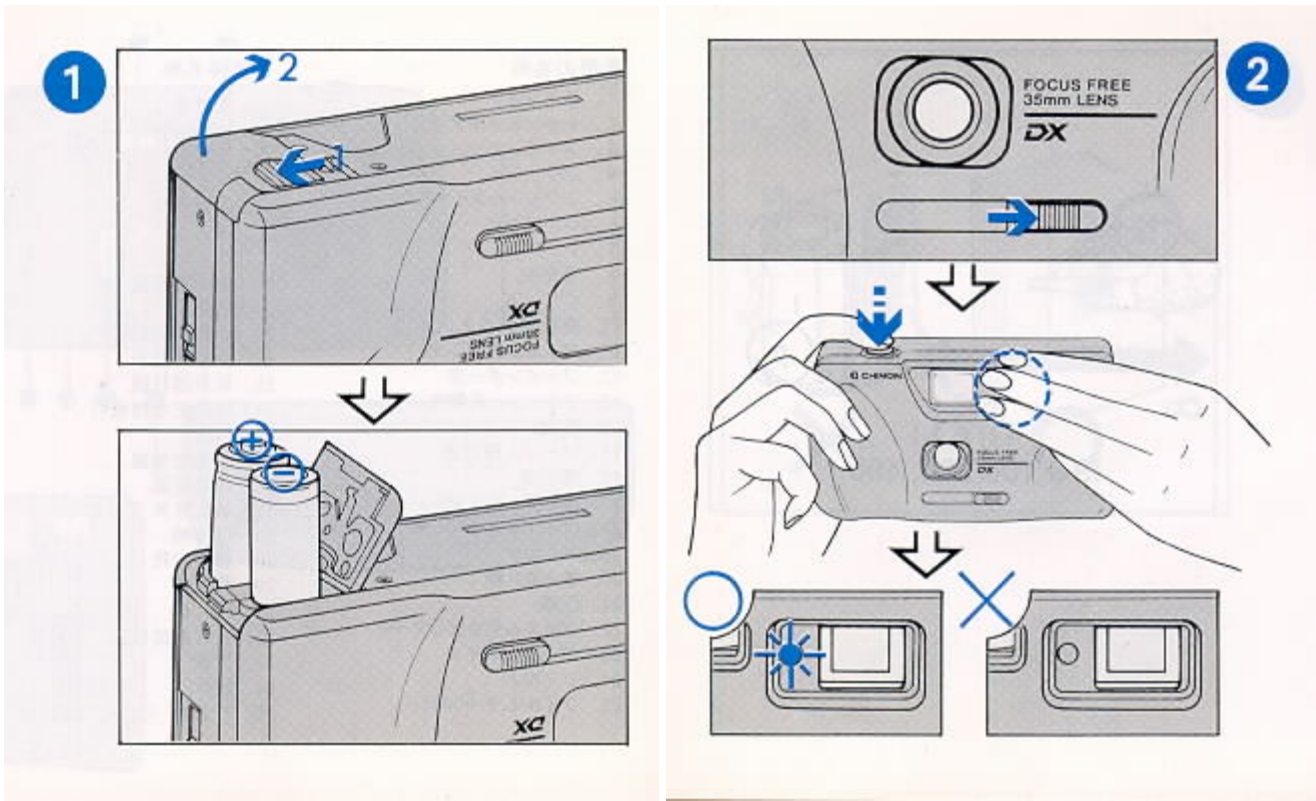
13. Flash ready indicator

14. Back cover

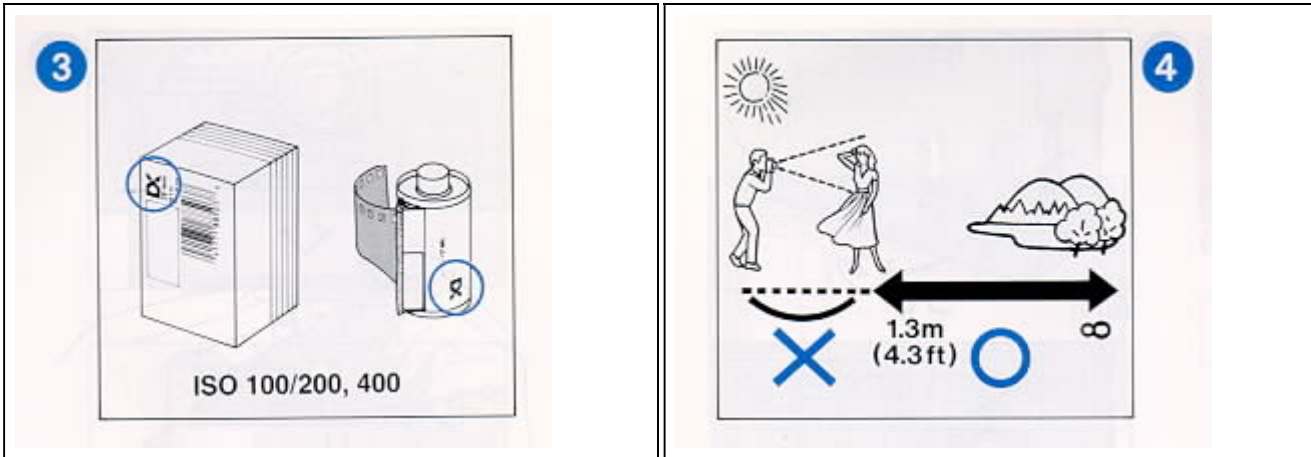


15. Cartridge window	21. Film pressure plate
16. Battery compartment cover	22. Film tip mark
17. Rewind switch	23. Film guide
18. Film rewind shaft	24. Automatic film speed setting probe
19. Sprocket	25. Film chamber
20. Take-up spool	

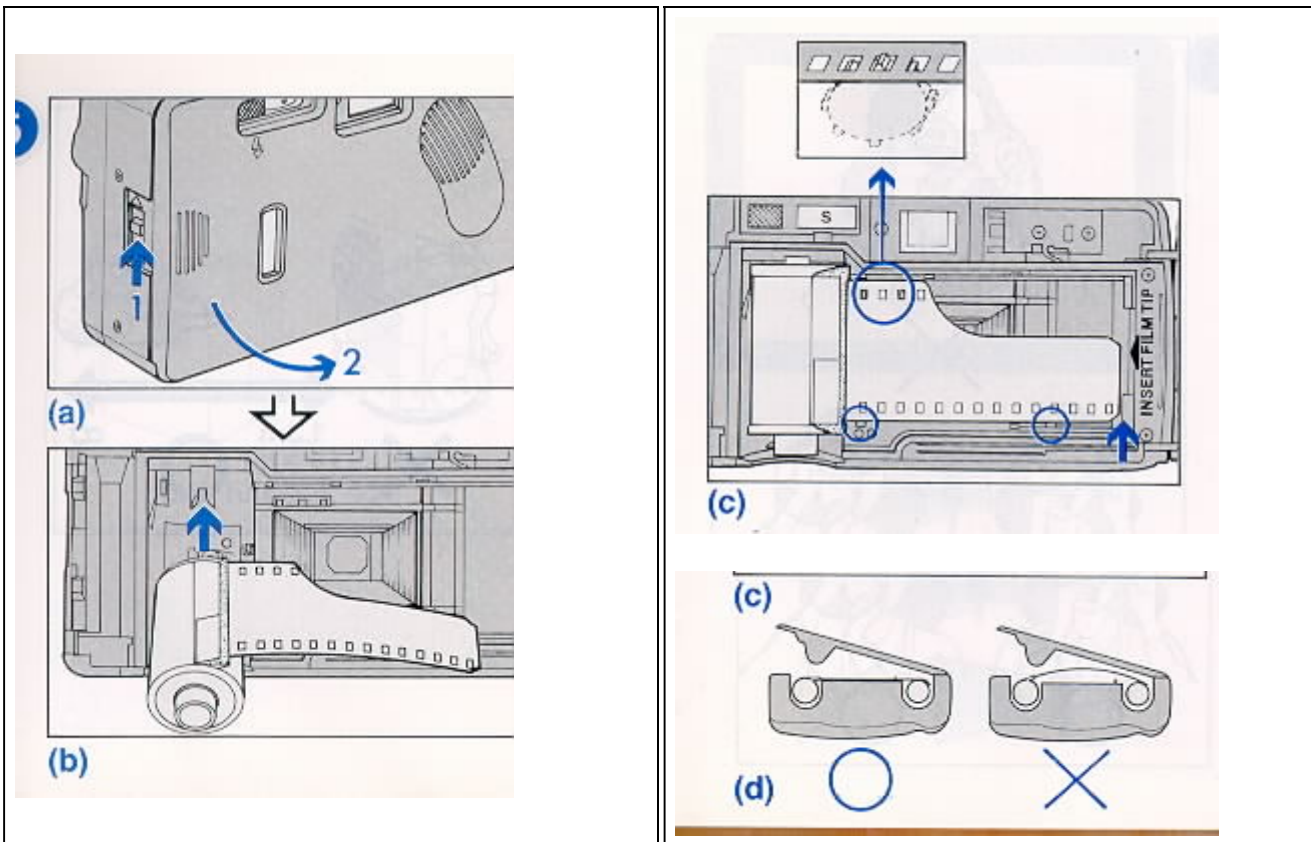
Installing two 1.5V "AA: batteries (LR6) / Battery testing

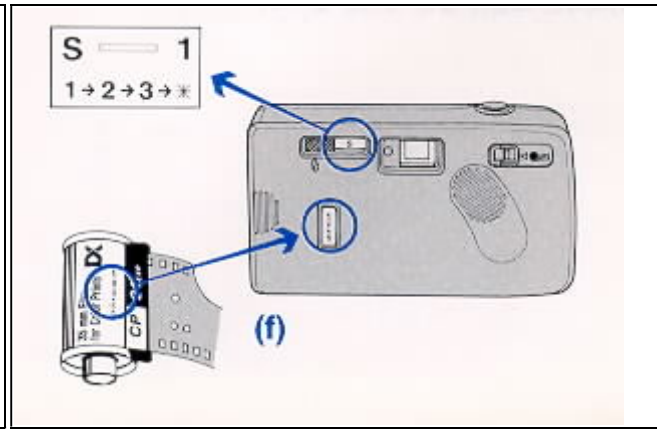
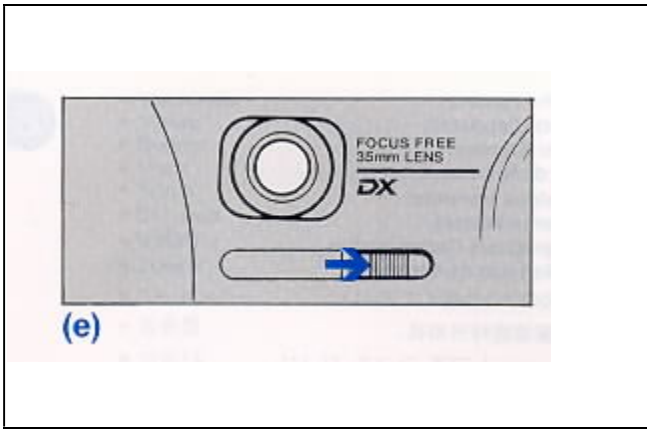


Automatic film speed setting / Focus Range

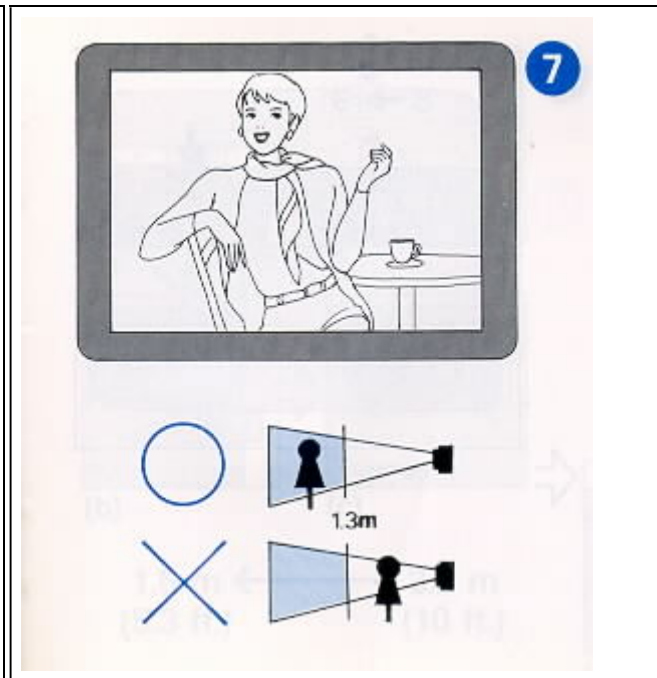
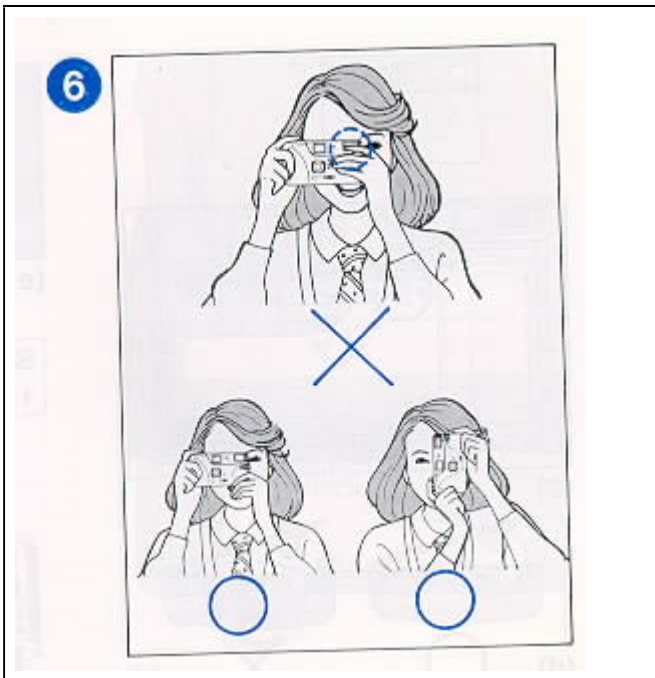


Film loading (Release shutter three times)

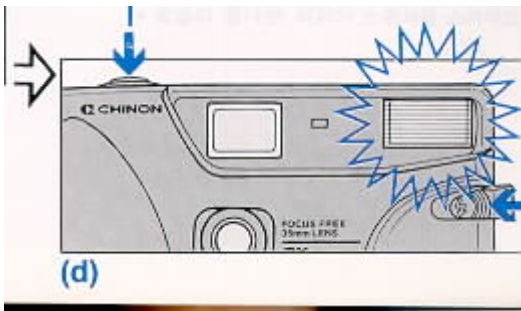
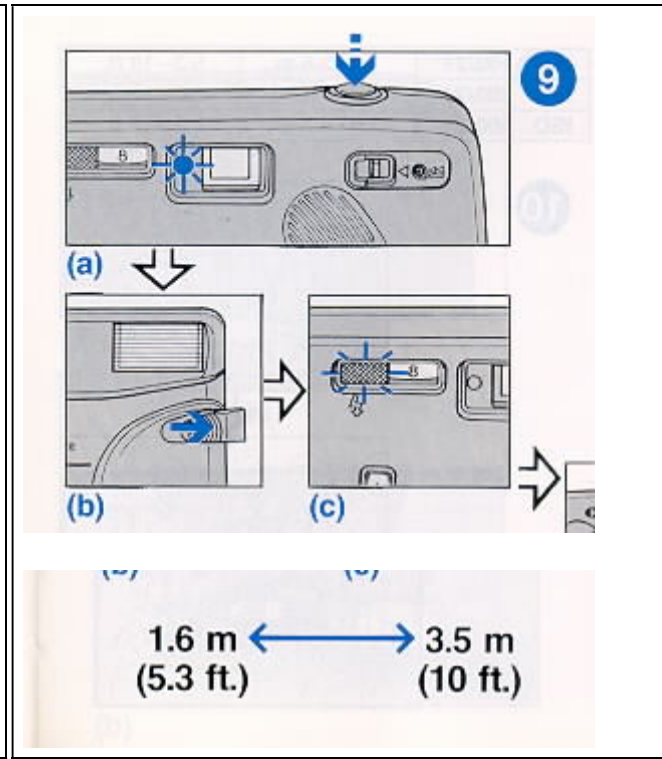
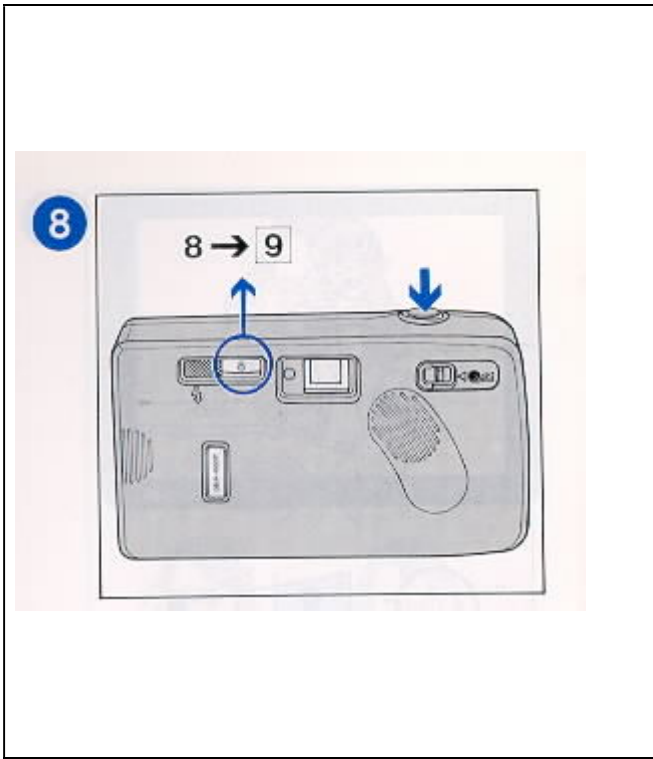




Holding the camera / Viewfinder

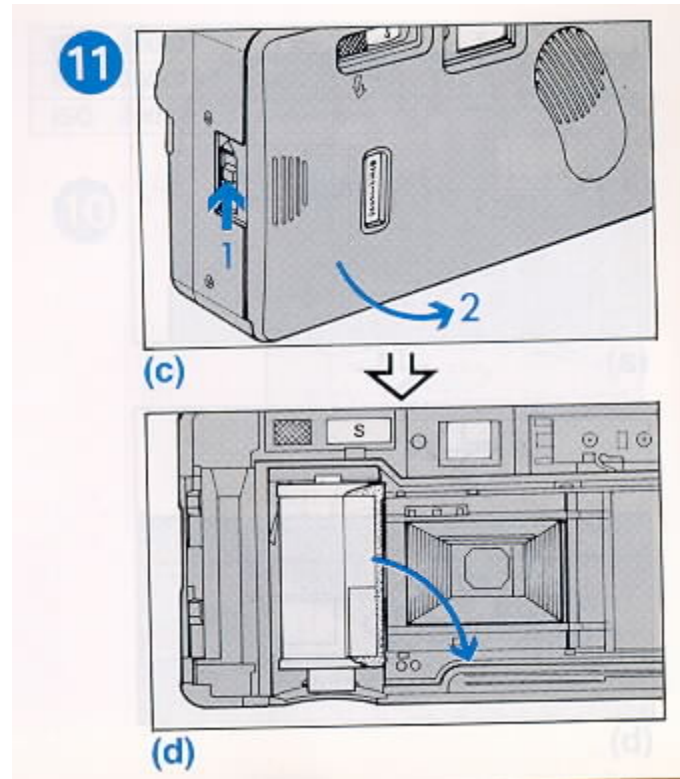
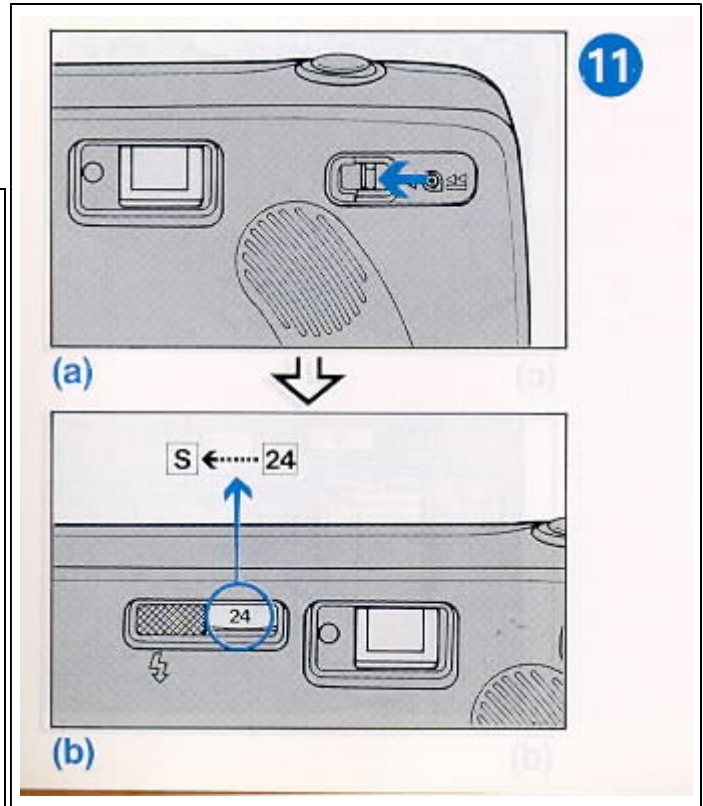


Automatic film winding / Flash photography

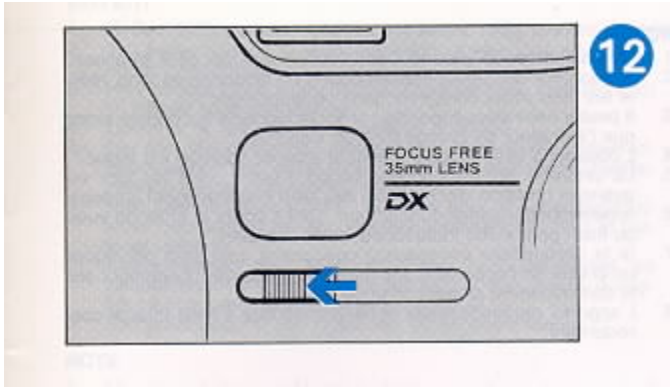


Flash photography range (for color negatives) / Automatic rewinding (Film ends and motor stops).

ISO 100/21°	1.6–3.5 m	5.3–10 ft.
ISO 200/24°	1.6–4.4 m	5.3–14 ft.
ISO 400/27°	1.6–6 m	4.3–11 ft.



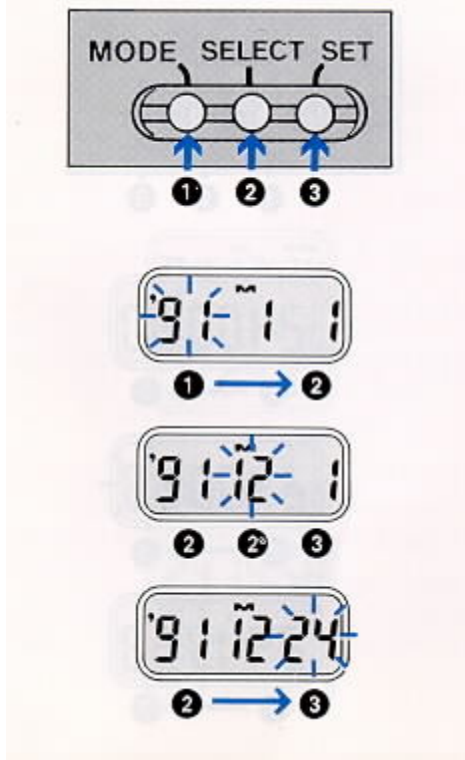
Close the lens cover



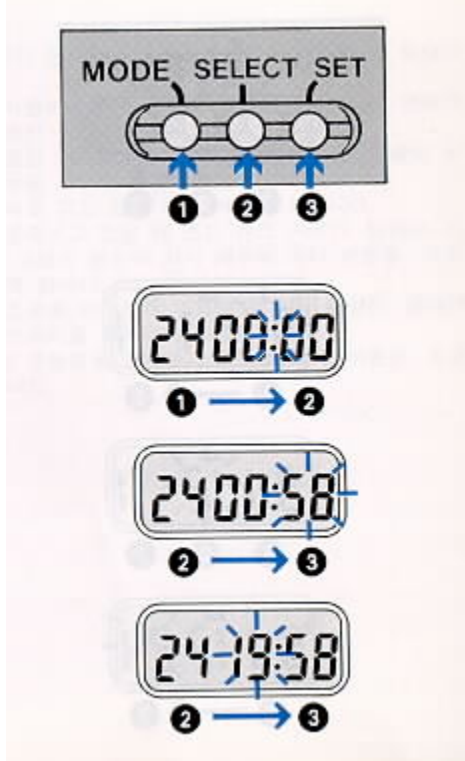
NOTE:

1. Do not use Ni-Cad batteries use alkaline batteries only.
2. If you do not intend to use your camera for a long period of time, remove the batteries, and store in a dry location.
3. Underexposure may result if the shutter is released before the flash-ready light illuminates.
4. The shutter will be locked when the lens cover is in the closed position.
5. Depressing the shutter release button during film advance or while the protective lens cover is in the closed position over the lens, can cause damage to the camera.
6. After using the electronic flash, return the flash switch to the "OFF" position to avoid unnecessary battery drain.
7. Depress the camera's shutter release gently each time a picture is to be taken. Rapid, forceful movements may result in camera shake and blurred pictures.
8. The camera will only function properly when it is correctly loading

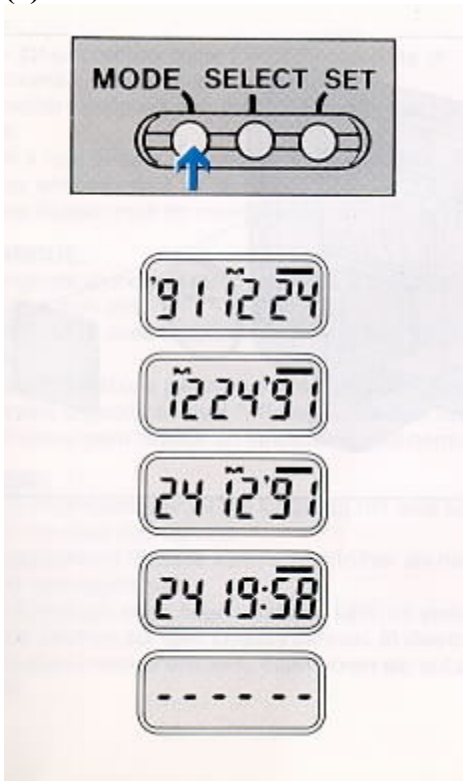
(1) (A) Year/month/day setting - Example: 24 December, 1991



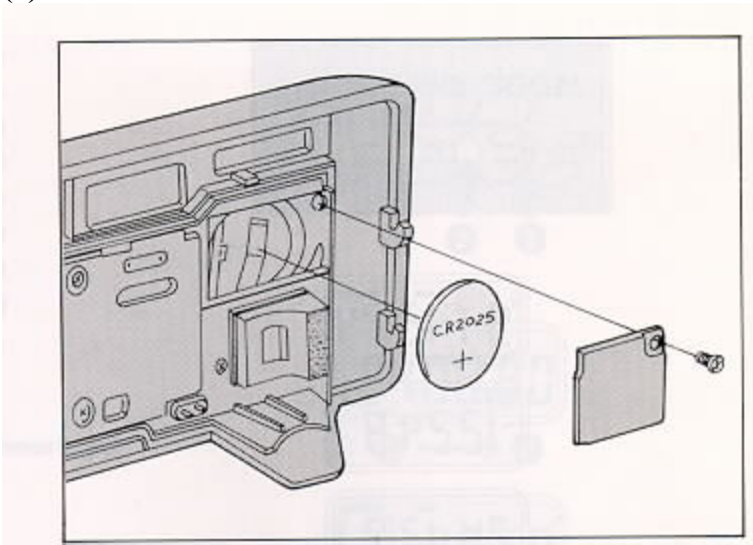
(1) (B) Hour/minute setting - Example: 19:58 (PM 7:58)



(2) DATA IMPRINTING



(3) BATTERY REPLACEMENT



NOTE:

- A 3 V lithium battery (type CR2025) has a life of approximately three years.
- The battery supplied with the unit may not last for three years.
- When a new battery is installed, the characters on the display window might be blinking. Press the shutter release button once for normal operation.

- Care of the Camera

This camera is a precision photographic instrument. When used with care B will provide years of trouble-free service. Protect your camera from dirt, rain, dampness and excessive heat. Avoid touching the lens. To clean the lens, wipe gently with a soft lintless cloth or tissue. Do not use eyeglass tissues as they might damage the lens coating. Do not open and touch the inside of the camera as possible high voltage in the flash circuitry can be dangerous. When the camera will not be in use for a long period of time, turn on the Main Power Switch and store in a well ventilated, cool, dry place.

Due to the sensitive characteristics of the micro computer built into the camera, the camera may not operate properly even when a fresh battery is installed. It is not a malfunction. If this should occur, turn the Main Power Switch "ON" and "OFF" or reinstall the battery again.

- Because we continually strive to improve our products we may change specifications without notice