

Century Graphic 23

posted 6-6-'03

This camera manual library is for reference
and historical purposes, all rights reserved.

This page is copyright© by mike@butkus.org, M. Butkus, NJ.

This page may not be sold or distributed without
the expressed permission of the producer

I have no connection with any camera company
On-line camera manual library.

[Back to main on-line manual page](#)

www.butkus.us

**If you find this manual useful,
how about a donation of \$3 to:**

M. Butkus, 29 Lake Ave.,
High Bridge, NJ 08829-1701
and send your e-mail address
so I can thank you.

Most other places would charge
you \$7.50 for a electronic copy
or \$18.00 for a hard to read Xerox copy.

This will help me to continue to host this site,
buy new manuals, and pay their shipping costs.

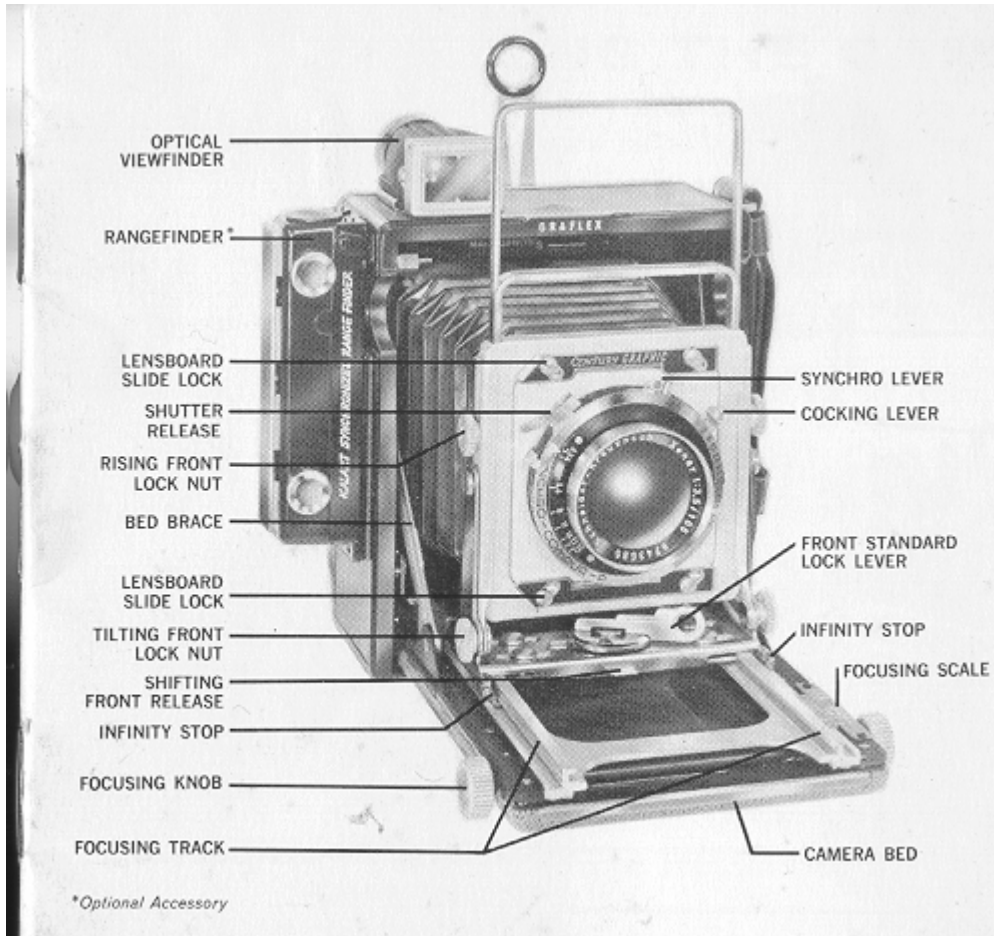
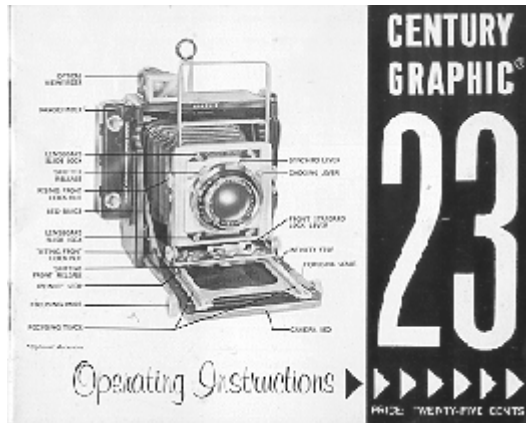
It'll make you feel better, won't it ?

If you use Pay Pal or wish to use your credit card,
click on the secure PayPal site below.



www.PayPal.me/butkus

Venmo @mike-butkus-camera



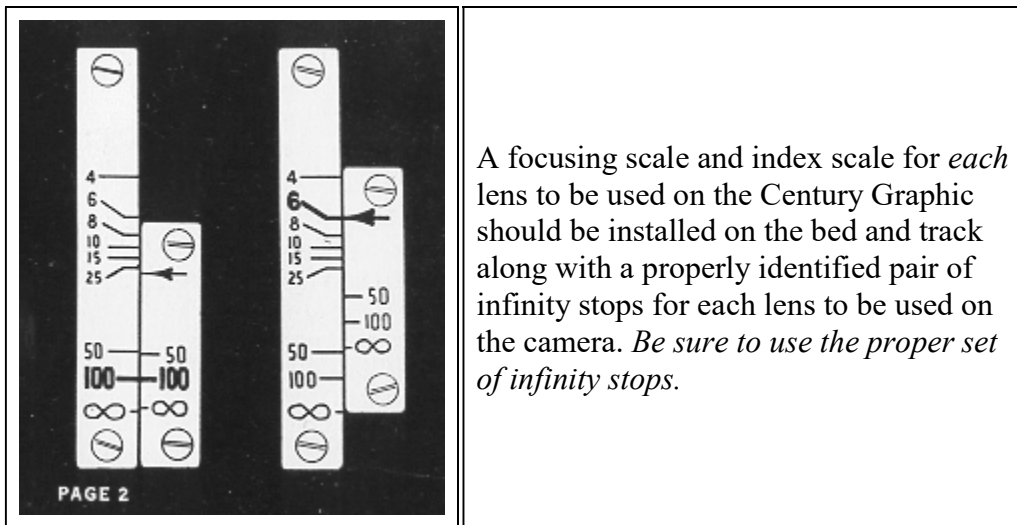
OPENING THE CAMERA

1. Press the bed release button at the top center of the camera body (appears as a bump in covering).
2. Lower door or bed until it locks in a horizontal position.
3. Swing the front standard lock lever out straight and pull it outward on the track to the infinity stops. *(To move the front standard beyond the normal working position, fold the infinity stops down.)*
4. Relock the front standard.

CLOSING THE CAMERA

1. Close the sports viewfinder frame and swing down the sports viewfinder eyepiece.
2. If the front standard movements have been used, return them to normal as follows:
 - a. Drop the lensboard to the lowest position and lock it.
 - b. Tilt the lensboard back to its normal, vertical position and lock it.
 - c. Bring the shift of the front standard to neutral.
3. Rack the track back to the limit of its movement.
4. Unlock the front standard and push it back into the camera body. Lock it.
5. Press down on the bed braces to release and close the bed. It will lock closed with a click.

SCALE FOCUSING



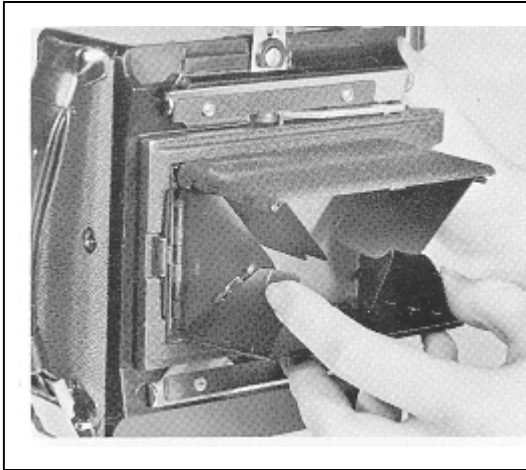
A focusing scale and index scale for *each* lens to be used on the Century Graphic should be installed on the bed and track along with a properly identified pair of infinity stops for each lens to be used on the camera. *Be sure to use the proper set of infinity stops.*

The focusing scales on the Century Graphic 23 Camera are of the modified vernier type with one part carried on the camera bed and the other on the sliding track. The distances indicated are from film position to the subject. Each focusing scale is calibrated especially for the lens supplied with it. If this scale is used with any other lens, even of the same make, speed and focal length, *out of focus* pictures may result since lenses vary somewhat from their indicated focal length.

Focus on greater distances by matching the figures for the measured subject distance indicated on each scale. For shorter distances use the pointer at the front of the short index scale set opposite the figure representing the subject subject distance.

GROUND GLASS FOCUSING

Ground glass focusing is recommended for all critical photography. It must be used when the front is tilted, shifted or otherwise moved from the normal position



1. To open the focusing hood, press down on the latch. To close the hood, first press in on the side wings and up on the bottom panel, then pull the top downward until it latches.
2. To remove the focusing hood (allowing the use of a magnifying glass over the entire ground glass area): lift up on the release latch while pressing sideward on either of the two catches holding the focusing hood onto the focusing panel. Lift the focusing hood up. To reattach: position over the ground glass and press in until it snaps into place.

NOTE: *The focusing panel for your Century Graphic 23 Camera may be converted to include Ektalite at a Graflex Service Department.*

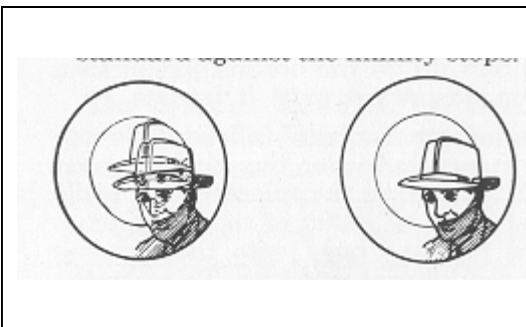
FOCUSING PANEL

1. To remove: Press down on the knurled edges of both focusing panel release arms. Slide across camera about 1/4" and lift off.
2. To attach: Release the slide locks place the focusing panel approximately in the normal position and slide it 1/4" to engage the release arms; it will snap into place.

SLIDE LOCKS

Release by sliding to the left. By sliding firmly to the right, any attachment (e.g. Roll Holder, Grafmatic, Graflarger, etc.) can be held firmly in position.

KALART RANGEFINDER FOCUSING



TO USE:

1. Open camera and move the front standard against the infinity stops.
2. Look into the rangefinder eyepiece and rack the track forward until the image of your subject as seen in the central, moving field exactly coincides with the larger stationary image.

EXTRA LENSES

Additional lenses must be focused by ground glass or focusing scale.

The Kalart Rangefinder may be focused on the subject and the distance read from the focusing scale matching the lens for which the rangefinder is adjusted and this reading transferred to the focusing scale for the lens being used.

LIGHT BEAM FOCUSING FOR NIGHT PHOTOGRAPHY

When it is too dark to see the image clearly by looking through the rangefinder, the accessory: Kalart Focuspot may be attached to the top of the rangefinder. Electrical energy is obtained by plugging into the battery outlet of the Graflite Battery Case. When the Focuspot is "On," two beams of light are projected through the rangefinder.

Focusing will cause one beam of light to move with respect to the other. When they coincide on the subject, the lens is automatically in focus on that particular subject.

VIEWFINDERS

The Century Graphic is equipped with both a sports viewfinder and an optical viewfinder. Both are used to best advantage when the eye is held as close as possible to the rear element.

SPORTS VIEWFINDER

The sports viewfinder frame may be lifted by grasping the grips of the extendable frame and pulling upward as far as possible. Swing the eyepiece to an upright position.

OPTICAL VIEWFINDER

The optical viewfinder is often preferred since it may be fitted with masks of different sizes to correspond with the field coverages of different focal length lenses (see chart below).

Parallax Adjustment · Rotate the eyepiece dial until the number which most closely corresponds to the distance from the subject is opposite the line along the top center of the finder.

STANDARD MASKS AND LENSES FOR VARIOUS FILM SIZES

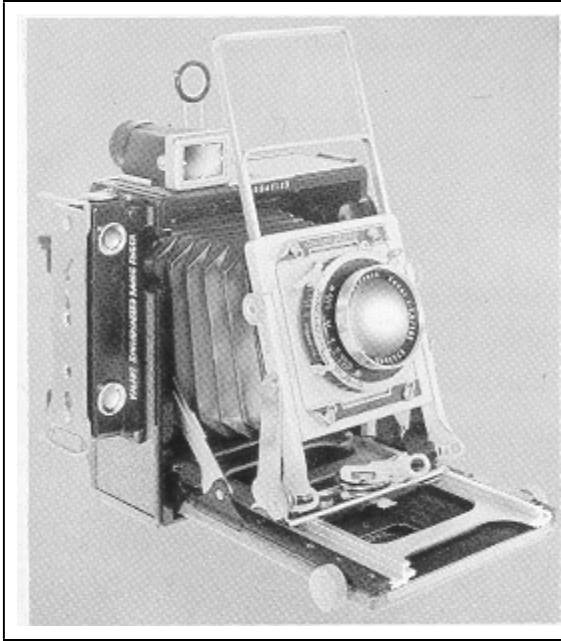
Table Showing Standard Masks and Lenses for Various Film Sizes (not Camera size)

2¼ x 3¼ FILM LENS	MASK NUMBER	2¼ x 3¼ FILM LENS	MASK NUMBER	2¼ x 2¼ FILM LENS	MASK NUMBER
63.5 2½"–3" 76	*	150 6¼"–7½" 190	11	100 3¼"–4½" 114	12
83 3¼"–3¾" 99	3	110 7¼"–7¾" 197	8	4¼"–5" 127	14
100 3¼"–4½" 114	2	117 7¼"–9½" 241	7	5¼"–6" 152	15
4¼"–5" 127	9	121 9¼"–11¾" 302	6	6¼"–8" 203	17
5¼"–6" 152	10	11¼"–13" 330	5	9¼"–11¾" 302	13

*Wide angle viewfinder adapter Cat. No. 3060

FRONT STANDARD ADJUSTMENTS

The Century Graphic 23 has three important adjustments to shift, rise, and tilt the lens and shutter. Each movement may be used independently, or with the others.



RISING FRONT

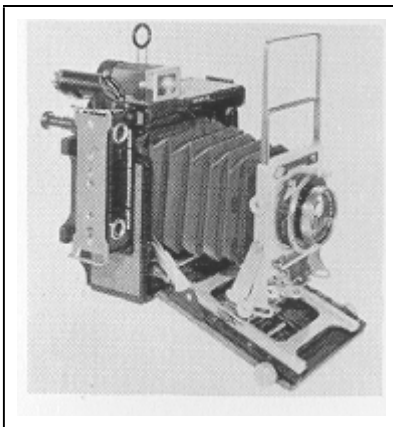
1. Loosen both rising front lock nuts-- lift the lens board frame. Retighten lock nuts before making the picture.

SIDE SHIFTING FRONT

1. Release the front standard lock.
2. Press down on the lateral shift, release and slide the front standard left or right as desired and retighten the front standard lock.

TILTING FRONT

1. Loosen the tilting front lock nuts.
2. Tilt the lens board as desired. Retighten the lock nuts.



DROP BED

1. Provides downward or forward tilt of the lens.
2. Allows lowering the lens board--the opposite effect of "rising front."
3. Eliminates cut-off when wide angle lenses are used.

TO LOWER THE BED:

1. Rack the track all the way back.
2. Press downward on both bed braces and snap the bed into the lowered position.

TO RAISE THE BED:

1. Rack the track back.
2. Press down on the bed braces to unlock, and allow the bed to rise.

INTERCHANGEABLE LENSES

The long bellows extension of the Century Graphic 23 permits a choice of lenses ranging from wide angle (short focal length) to telephoto (long focal length). A set of matching focusing scales and infinity stops should be installed for each lens; a rangefinder fitted to the camera should be adjusted for the lens normally used.

CHANGING LENSES

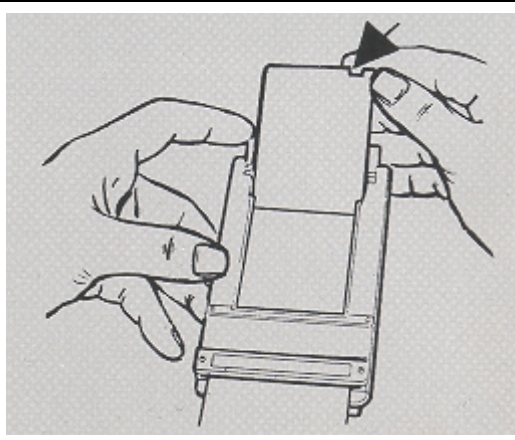
1. To remove the lens and its board: Slide both lensboard locks laterally to the full out position. Lift the lens and shutter assembly out.
2. To install a lens: Insert the lens on its board onto the camera. Press the lensboard firmly into the front frame and slide both lensboard slide locks to the *full* in position

FLASH PHOTOGRAPHY GRAFLITE

The Graflite Battery Case can be attached to the handle lugs on the left side of the camera, or to an extra pair of lugs, (Cat. No. 2756), fitted to the right side of the camera. Holes are already in the camera to accept the extra lugs. If the accessory Kalart Rangefinder is on the camera, attach mounting plate, Cat. No. 2754, to it.

(See the complete Graflite manual for full details concerning use and operation.)

SHEET FILM HOLDERS



Sheet film holders (Cat. No. 1212) hold two sheets of film, one on each side. To fit to the cameras, slide it under the focusing panel as far as possible.

Sheet film, which is available in the greatest variety of emulsions, comes packaged in a box with each piece of film interleaved with a sheet of black paper. It must be loaded and unloaded in total darkness, but has the advantage of: allowing the processing of one or more exposed negatives as desired.

While the following instructions will help you, we urge you to practice in the light with a piece of exposed film.

To load the holder: Withdraw the slide and open the end flap. Handle the film by the edges only, keeping the film code notch in the upper right corner as shown. Slide the film all the way into the channels formed by the metal flanges or lips on all three sides of the film septum in the holder. If the bottom flap does not seat smoothly, the film has not been pushed under the upper end of the septum. Insert the dark slide with the raised dots on the bright side of the handle facing outward, indicating that the film is ready to be exposed. Turn the catch or hook to prevent unintentional withdrawal.

After exposing film, reinsert the slide with the black side of the handle facing outward - to indicate exposed film.

ACCESSORY INSTALLATION

Consult separate instructions packed with each accessory for full operating details.

ROLL HOLDERS: Remove focusing panel and secure with slide locks.

GRAFOMATIC HOLDER: Slide under focusing panel and secure with slide locks.

FILM PACK ADAPTER: Slide under focusing panel - secure with slide locks if desired.

GRAFLARGER: Remove focusing panel and secure with slide locks.