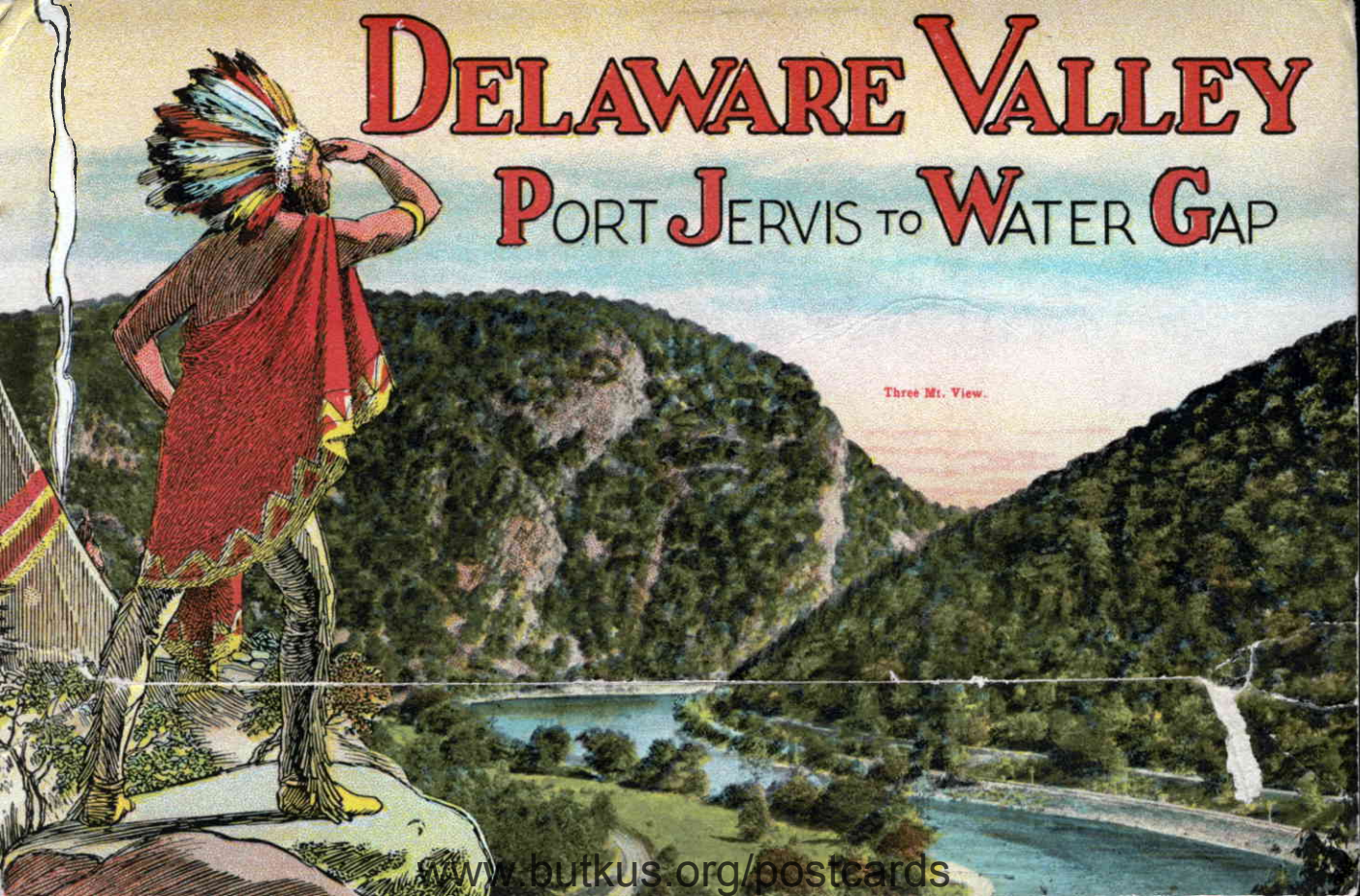


# DELAWARE VALLEY

## PORT JERVIS TO WATER GAP





# Delaware Valley

Water Gap to Port Jervis



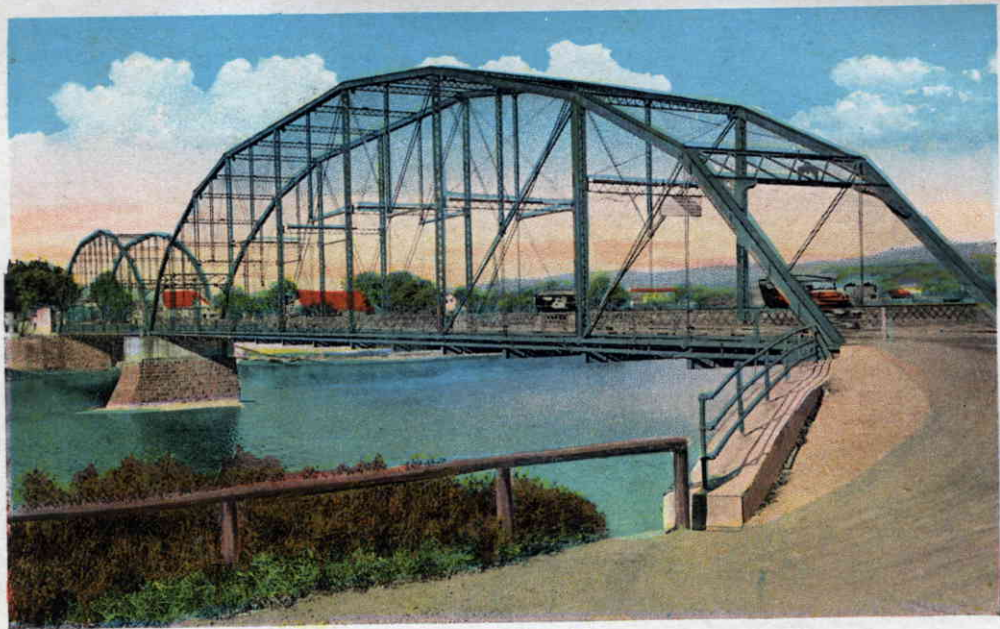
Miss Nora Awaad

614 - 25<sup>th</sup> St.

Union City

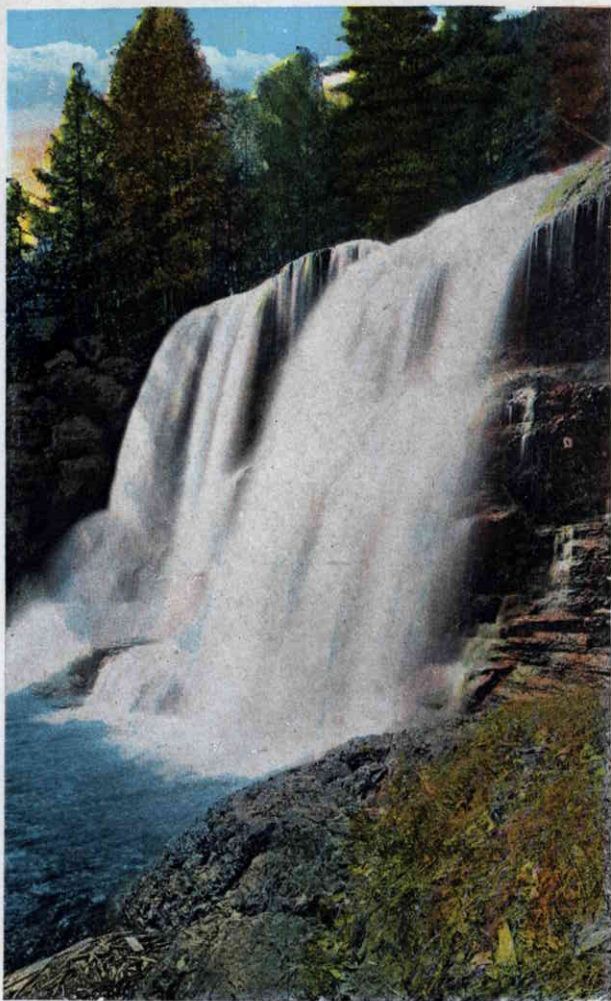
N. J.

DELAWARE VALLEY  
PORT JERVIS TO WATER GAP



PORT JERVIS BRIDGE OVER THE DELAWARE, CONNECTING PENNSYLVANIA  
AND NEW YORK STATES.

[www.butkus.org/postcards](http://www.butkus.org/postcards)

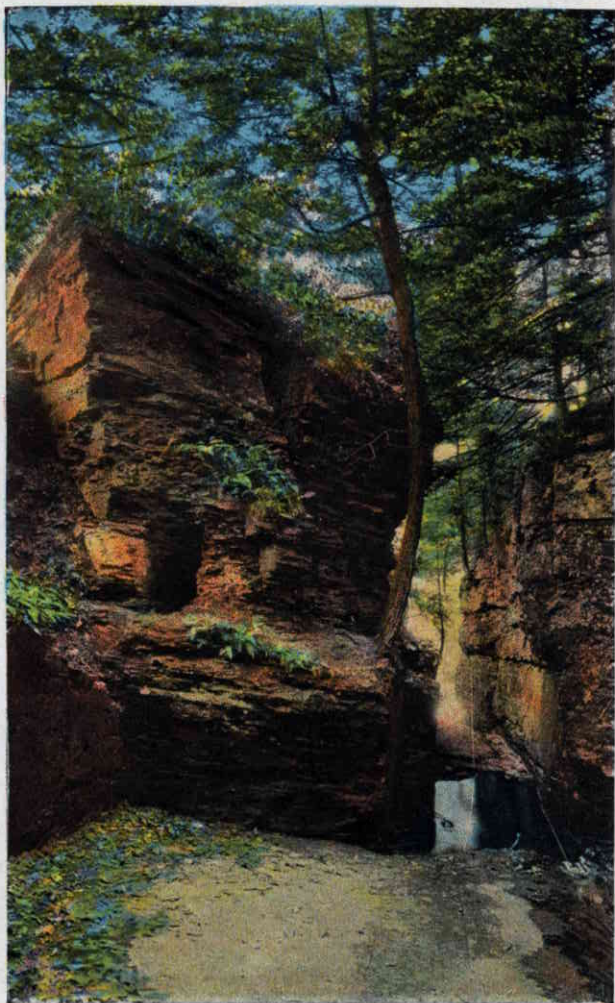


SAWKILL FALLS AT MILFORD, PIKE COUNTY, PA.





HIGH FALLS ON DINGMAN'S BROOK IN  
DINGMAN'S FERRY, PA.



[www.butkus.org/postcards](http://www.butkus.org/postcards)

"NATURE'S OVEN," A FREAK OF NATURE IN  
SILVER THREAD GLEN.

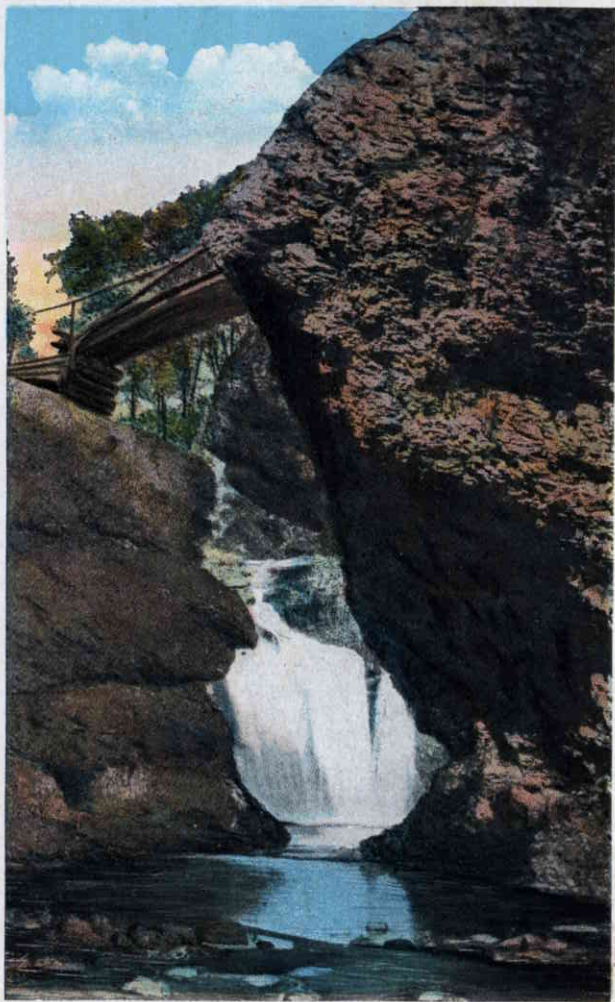


BUSHKILL FALLS.



LOWER RAYMONDSKILL FALLS AND BRIDAL  
VEIL FALLS.





MARSHALL'S FALLS, MARSHALL'S CREEK.



DEERLEAP FALLS, CHILD PARK, PIKE COUNTY, PA.

# DELAWARE VALLEY

## PORT JERVIS TO WATER GAP

Three miles from Stroudsburg; seventy-eight miles to New York.

On leaving the City of Stroudsburg, you descend into the valley of the famous Gap.

Here you see before your eyes the great Mountain Chain, which seems to have been cut through by some great machine.

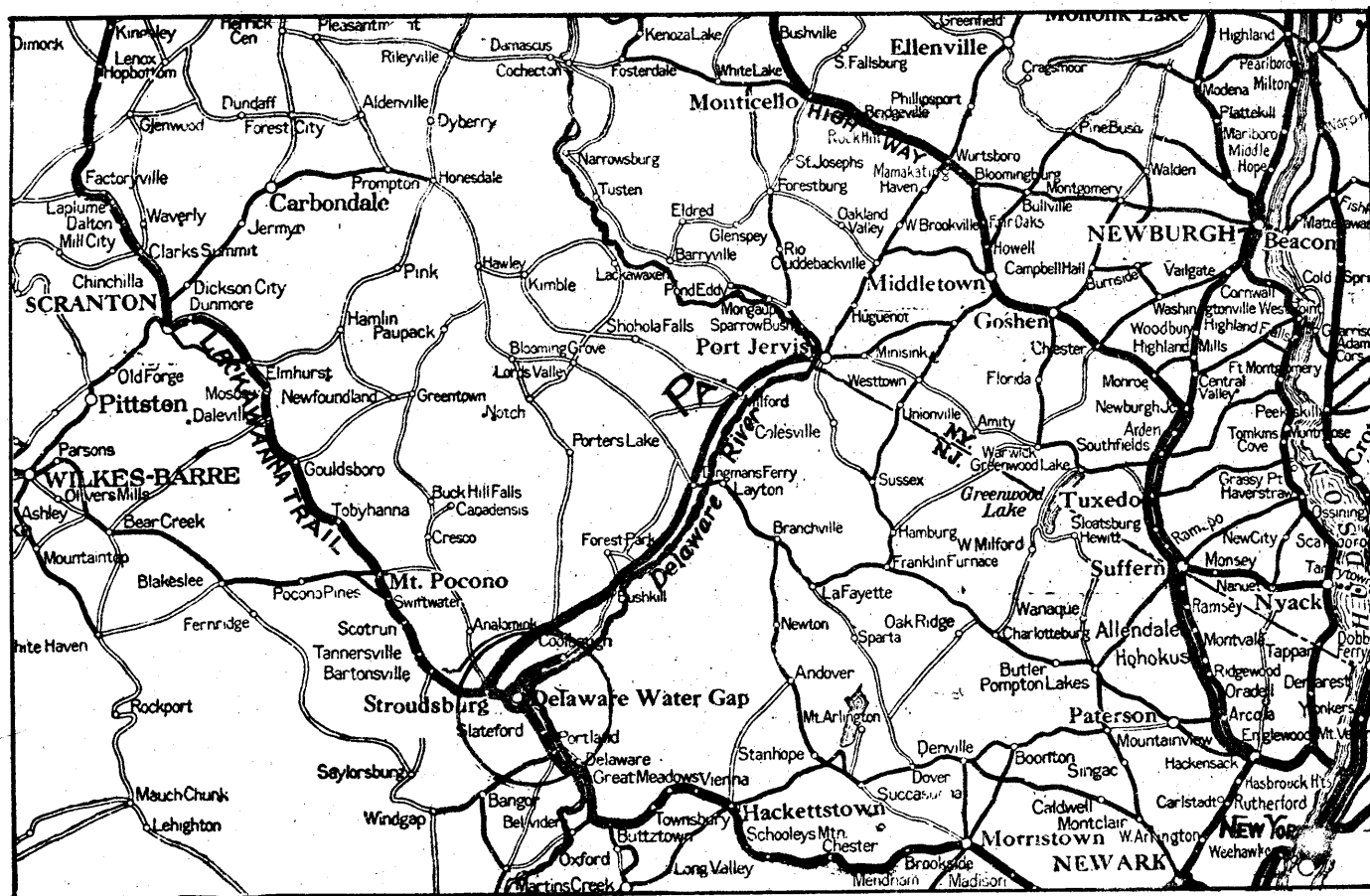
On the Jersey side rises Mount Tammany, a frowning fortress of granite over 1,600 feet high.

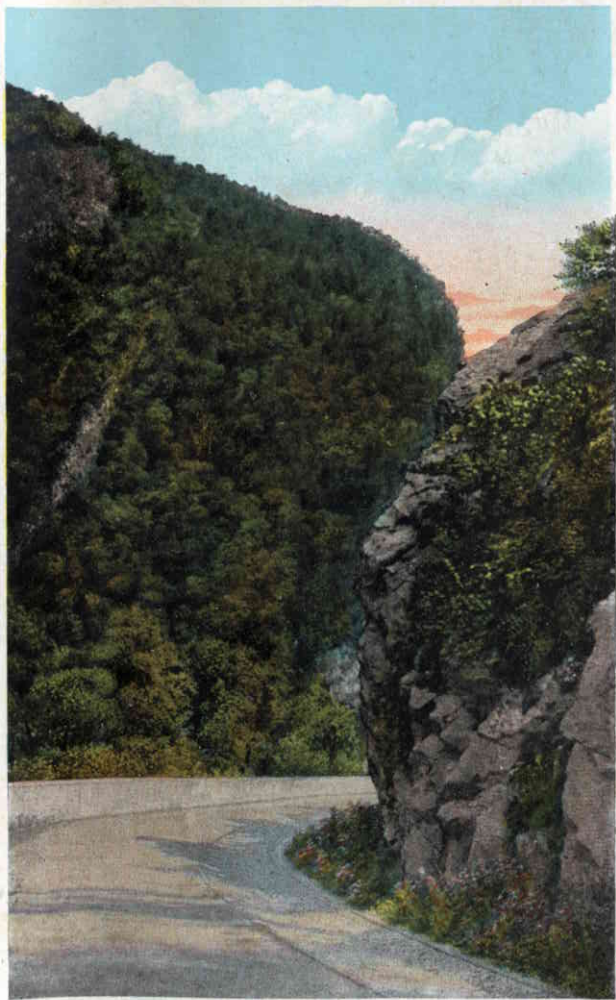
Just opposite, on the Pennsylvania side, rises "Mount Minsi," 1,700 feet high, but having sides less perpendicular. At the base of these high mountains flows the Delaware River.

The scenery surrounding the Gap is wonderful and incomparable. The picturesque Delaware River from Port Jervis, N. Y., to the Delaware Water Gap flows through a valley rich in historic associations. Here during the latter half of the 17th and the early part of the 18th centuries the Dutch settled, finding in the broad flats that bordered the river a haven of rest from the wars and turmoils of the Old Country. Sprinkled among the Dutch families were a few sturdy French who also sought to better their condition. These settlers cleared the forests and subdued the soil, leaving a rich heritage to those who came after.

Eight miles down the river from Port Jervis is Milford, the country seat of Pike Co. Here is the home of the Hon. Gifford Pinchott, on whose estate is the beautiful Sawkill Falls. Also situated in this village is a monument erected to the memory of Tom Quick, the noted Indian fighter of Revolutionary days.







BETWEEN THE MOUNTAINS OF THE GAP.



THE INDIAN PROFILE ON THE RUGGED SIDES OF MOUNT TAMMANY.





VIEW FROM HIGHWAY, DELAWARE WATER GAP, PA.

[www.butkus.org/postcards](http://www.butkus.org/postcards)



THE KITTATINNY—"ALONG THE DELAWARE," DELAWARE WATER GAP, PA.

[www.butkus.org/postcards](http://www.butkus.org/postcards)



THREE MOUNTAIN VIEW, DELAWARE WATER GAP, PA.

[www.butkus.org/postcards](http://www.butkus.org/postcards)





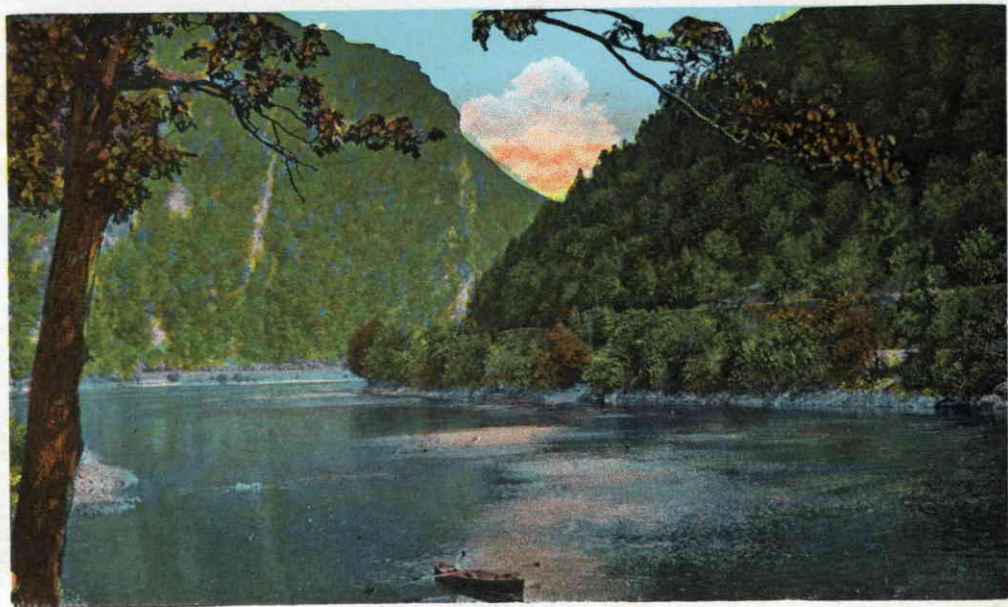
DELAWARE WATER GAP, PA., SHOWING PROMONTORY.

[www.butkus.org/postcards](http://www.butkus.org/postcards)



DELAWARE WATER GAP FROM MT. MINSI.

[www.butkus.org/postcards](http://www.butkus.org/postcards)



DELAWARE WATER GAP FROM THE SHORE  
[www.butkus.org/postcards](http://www.butkus.org/postcards)





"THE INDIAN PROFILE," NATURE'S WONDER—DELAWARE WATER GAP, PA.  
MOUNT TAMMANY. 1600 FEET ELEVATION.

[www.butkus.org/postcards](http://www.butkus.org/postcards)